

Japanese Beetle Look-A-Likes in Western Colorado

How to identify Japanese beetle adults

Adults are 3/8th of an inch in size and are oval in shape. Adults are generally metallic green with coppery-brown wing covers that do not quite cover the tip of the abdomen. Along the sides of the beetle there are five white tufts of hair that are characteristic of this species. Antennae are clubbed at the tips and may spread to be fan like.

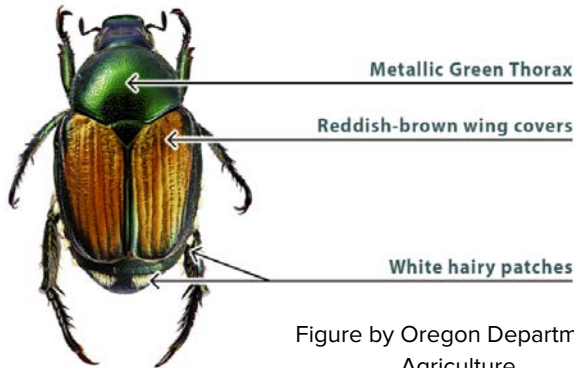


Figure by Oregon Department of Agriculture.

Japanese beetle larvae/grubs

Immature Japanese beetles are soft-bodied grubs or larvae that are c-shaped, with a brown head on one end. There are lots of larvae that look like this, it difficult to tell them apart. Professionals identify grubs like Japanese beetle by looking patterns of hair on the hind part of their abdomen.



The pattern of hairs is distinctive for white grubs of the Japanese beetle. It can be difficult to tell larvae apart. Photograph courtesy of David Shetlar, The Ohio State University.

There are many adult and immature insects that look a lot like a Japanese beetle adult or larva. If you think you have a Japanese beetle, please confirm its identification with CSU Extension in the Tri-River Area: 970-244-1834 or bring a sample to the Tri-River Extension office, 2775 Highway 50, Grand Junction. Place your sample in a hard-sided container or zip-top bag.

Japanese Beetle Look-A-Likes Beetles (Order: Coleoptera)



Southwestern masked chafer (*Cyclocephala hirta*)
Image: CSU Extension



Bumble flower beetle (*Euphoria inda*)
Image: USU Extension



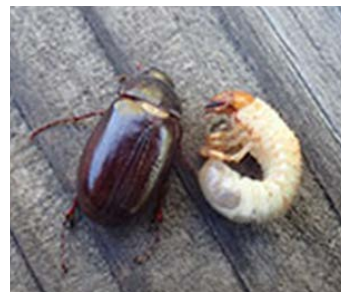
Rainbow scarab (*Phanaeus vindex*)
Image: Purdue University



Bee-like flower scarab (*Trichiotinus* sp.)
Image: Mollie Freilicher



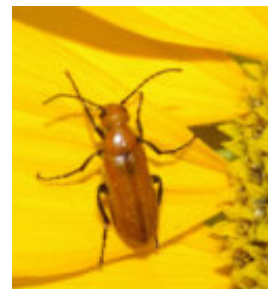
Hairy-bear scarab (*Paracotalpa grandicollis*)
Image: Matt Berger, iNaturalist.org



Adult and larva of a May/June beetle.
Image: Whitney Cranshaw, Colorado State University, (Bugwood.org)



Flower longhorn (*Cosmosalia chrysocoma*)
Image: Mollie Freilicher



Blister beetle on sunflower (*Nemognatha lurdia*)
Image: by Patti Susman in Grand Junction.



Elm leaf beetle (*Xanthogaleruca luteola*)
Photo: Joseph Berger, Bugwood.org.

Beetles (Order: Coleoptera)



Six spotted tiger beetle
(*Cicindela sexguttata*)
Image: Bob Hammon, CSU Extension



Festive tiger beetle
(*Cicindela scutellaris*)
Image: Wikipedia



Dogbane leaf beetle
(*Chrysochus auratus*)
Image: the University of Wisconsin



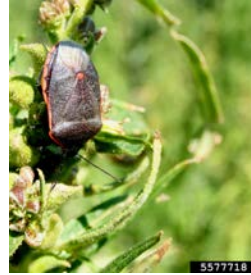
Cobalt milkweed beetle
(*Chrysochus cobaltinus*)
Copyright © 2009 Ron Hemberger, Bugguide.net, Photo#278493



Brown marmorated stink bug
(*Halyomorpha halys*)
Image: Whitney Cranshaw



Western conifer-seed bug
(*Leptoglossus occidentalis*)
Image: Whitney Cranshaw



Conchuela Stink Bug
(*Chlorochroa ligata*)
Image: Whitney Cranshaw



Stink bug
(*Chlorochroa* sp.)
Image: Mollie Freilicher



Rough stink bug
(*Brochymena* sp.)
Image: Whitney Cranshaw



Assassin bug
(*Zelus luridus*)
Image: Whitney Cranshaw

Elm seed bug
(*Arocatus melanocephalus*)
Photo: CSU Extension



Japanese Beetle Larva Look-A-Likes

Beetles (Order: Coleoptera)



Depicted are 3 species of "white grubs." The photo is useful as a comparison for size and appearance. The species L to R are: Japanese beetle (*Popillia japonica*), European chafer, (*Amphimallon majalis*), and June bug, (*Phyllophaga* sp.)



Ten-lined June beetle, full grown larvae
(*Polyphylla decemlineata*)
Photo: Bob Hammon, CSU Extension



Bumble flower beetle larvae
(*Euphoria inda*)
Image: Bob Hammon, CSU Extension

Prepared by Mollie Freilicher, Melissa Schreiner, and Melissa Franklin, Colorado State University Extension Tri-River Area. 03/2023



TRI-RIVER AREA
COLORADO STATE UNIVERSITY
EXTENSION